

## Parallel male - Parallel female liner - FOU



BSPB male thread

G 1/4

BSPB female thread

G 1/8

Operating pressure

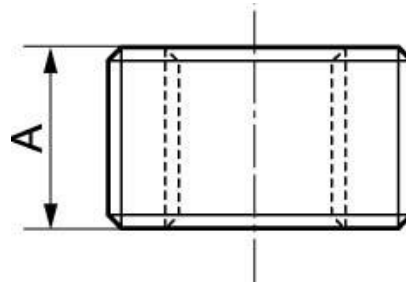
0 to 15 bar

Construction

Brass and nickel-plated  
brass

### Description

Reference	BSPB male thread	BSPB female thread
<b>FOU 1014</b>	G 1/4	G 1/8
<b>FOU 1417</b>	G 3/8	G 1/4
<b>FOU 1421</b>	G 1/2	G 1/4
<b>FOU 1721</b>	G 1/2	G 3/8
<b>FOU 2127</b>	G 3/4	G 1/2
<b>FOU 2734</b>	G 1	G 3/4



### Dimensions

Reference	A mm
<b>FOU 1014</b>	8
<b>FOU 1417</b>	9
<b>FOU 1421</b>	10
<b>FOU 1721</b>	10
<b>FOU 2127</b>	14
<b>FOU 2734</b>	20