

ISO A-Series hydraulic adaptor



Female thread

G 1/4

Nominal Ø (mm)

6

Flow rate (nominal in l/min)

12

Max operating pressure (bar)

350

Technology

Ball lock

Temperature

-25°C to +100°C

Construction

Body: steel

Applications

Agricultural

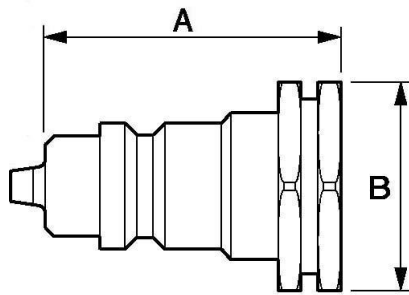
Connection

Semi-automatic

Description

Reference	Female thread	Nominal Ø (mm)	Flow rate (nominal in l/min)	Max operating pressure (bar)
HCA 066101	G 1/4	6	12	350
HCA 106102	G 3/8	10	23	350
HCA 136103	G 1/2	13	45	250

Reference	Female thread	Nominal Ø (mm)	Flow rate (nominal in l/min)	Max operating pressure (bar)
HCA 136221	M22 x 1.5	13	45	250
HCA 206104	G 3/4	20	106	250
HCA 256105	G 1	25	189	200



Dimensions

Reference	A mm	B mm
HCA 066101	35	19
HCA 106102	42.5	22
HCA 136103	48	27
HCA 136221	48	27
HCA 206104	57	34
HCA 256105	67.5	41