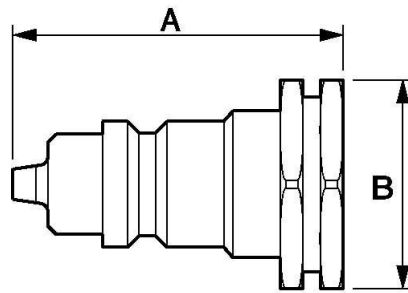


Interchangeable hydraulic adaptor with valve lock mechanism



<u>Inlet BSPP female thread</u> G 1/4	<u>Nominal Ø (mm)</u> 6	<u>Flow rate (nominal in l/min)</u> 12	<u>Max operating pressure (bar)</u> 400
<u>Profile</u> Interchangeable	<u>Technology</u> Ball lock	<u>Temperature</u> -25°C to +100°C	<u>Construction</u> Body: steel
<u>Applications</u> Industry, Agricultural	<u>Connection</u> Semi-automatic		

Description				
Reference	Inlet BSPP female thread	Nominal Ø (mm)	Flow rate (nominal in l/min)	Max operating pressure (bar)
HCG 066101	G 1/4	6	12	400
HCG 106102	G 3/8	10	23	300
HCG 206104	G 3/4	20	106	250



Dimensions

Reference	A mm	B mm
HCG 066101	38	19
HCG 106102	42.5	24
HCG 206104	57	34