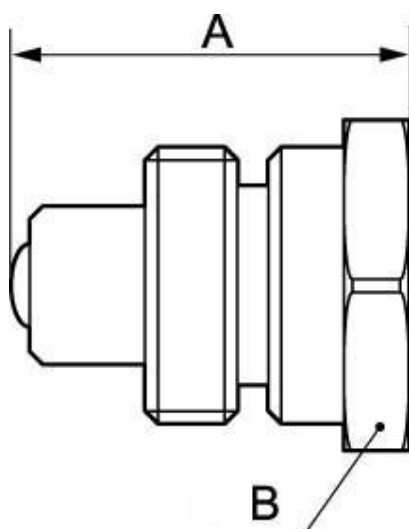


thread hydraulic High-Pressure adaptor



<p><u>NPT male thread</u> 1/4</p>	<p><u>Nominal Ø (mm)</u> 6</p>	<p><u>Flow rate (nominal in l/min)</u> 5</p>	<p><u>Max operating pressure (bar)</u> 700</p>
<p><u>Profile</u> Interchangeable</p>	<p><u>Technology</u> Screw lock</p>	<p><u>Temperature</u> -25°C to +100°C</p>	<p><u>Construction</u> Body: steel</p>
<p><u>Applications</u> Auto : cylinders, press extractors</p>	<p><u>Highlight</u> Pressurised connection</p>	<p><u>Connection</u> Manual screw thread</p>	

Description				
Reference	NPT male thread	Nominal Ø (mm)	Flow rate (nominal in l/min)	Max operating pressure (bar)
HBC 066201	1/4	6	5	700
HBC 106202	3/8	10	9	700



Dimensions		
Reference	A mm	B mm
HBC 066201	39	39
HBC 106202	40.5	32