

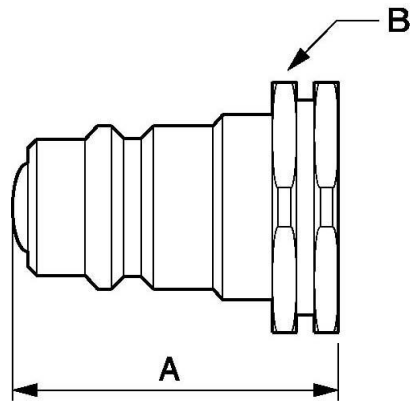
## Interchangeable hydraulic adaptor with ball lock mechanism



<u><b>BSPP female thread</b></u> G 1/4	<u><b>Nominal Ø (mm)</b></u> 6	<u><b>Flow rate (nominal in l/min)</b></u> 12	<u><b>Max operating pressure (bar)</b></u> 300
<u><b>Profile</b></u> Interchangeable	<u><b>Technology</b></u> Ball lock	<u><b>Temperature</b></u> -25°C to +100°C	<u><b>Construction</b></u> Body: steel
<u><b>Applications</b></u> Industry, Agricultural	<u><b>Connection</b></u> Semi-automatic		

Description				
Reference	BSPP female thread	Nominal Ø (mm)	Flow rate (nominal in l/min)	Max operating pressure (bar)
<b>HBG 066101</b>	G 1/4	6	12	300
<b>HBG 106102</b>	G 3/8	10	23	250
<b>HBG 136103</b>	G 1/2	13	30	200

Reference	BSPP female thread	Nominal Ø (mm)	Flow rate (nominal in l/min)	Max operating pressure (bar)
<b>HBG 206104</b>	G 3/4	20	60	200



### Dimensions

Reference	A mm	B mm
<b>HBG 066101</b>	38	19
<b>HBG 106102</b>	42.5	24
<b>HBG 136103</b>	48	27
<b>HBG 206104</b>	57	34