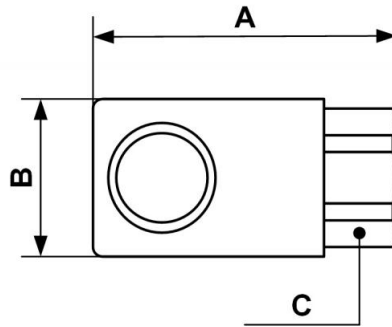


Parallel female thread coupler



<p><u>BSPF female thread</u></p> <p>G 1/4</p>	<p><u>Technology</u></p> <p>Push button</p>	<p><u>Operating pressure</u></p> <p>0 to 12 bar</p>	<p><u>Flow rate at 6 bar</u></p> <p>800 l/min ($\Delta P = 0,6$ bar)</p>
<p><u>Temperature</u></p> <p>-15°C to +70°C</p>	<p><u>Construction</u></p> <p>Composite body</p>	<p><u>Highlight</u></p> <p>Non scratch</p>	

Description	
Reference	BSPF female thread
IRC 061101	G 1/4
IRC 061102	G 3/8
IRC 061103	G 1/2



Dimensions			
Reference	A mm	B mm	C mm
IRC 061101	54	28	23
IRC 061102	62	28	23
IRC 061103	65	28	25