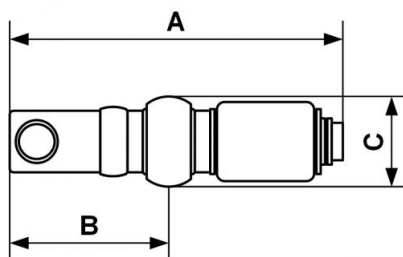


## Female thread swivel coupler



<p><b><u>BSPF female thread</u></b> G 1/4</p>	<p><b><u>Technology</u></b> Push button</p>	<p><b><u>Operating pressure</u></b> 0 to 12 bar</p>	<p><b><u>Flow rate at 6 bar</u></b> 800 l/min (<math>\Delta P = 0,6</math> bar)</p>
<p><b><u>Temperature</u></b> -15°C to +70°C</p>	<p><b><u>Construction</u></b> Composite body</p>	<p><b><u>Highlight</u></b> Non scratch</p>	

Description	
Reference	BSPF female thread
<b>IRC 061101FA</b>	G 1/4



### Dimensions

Reference	A mm	B mm	C mm
<b>IRC 061101FA</b>	157.7	41	40