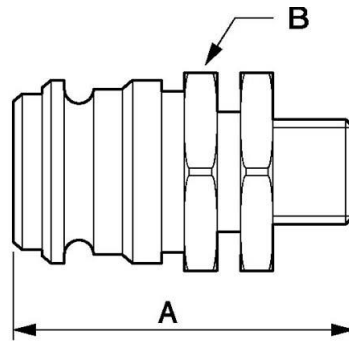


## Brake valve adaptor



<p><b><u>Female thread</u></b> M18 x 1.5</p>	<p><b><u>Nominal Ø (mm)</u></b> 13</p>	<p><b><u>Flow rate (nominal in l/min)</u></b> 24</p>	<p><b><u>Max operating pressure (bar)</u></b> 150</p>
<p><b><u>Profile</u></b> Brake valve</p>	<p><b><u>Technology</u></b> Ball lock</p>	<p><b><u>Temperature</u></b> -25°C to +100°C</p>	<p><b><u>Construction</u></b> Body: steel</p>
<p><b><u>Applications</u></b> Agricultural</p>	<p><b><u>Connection</u></b> Semi-automatic</p>		

Description				
Reference	Female thread	Nominal Ø (mm)	Flow rate (nominal in l/min)	Max operating pressure (bar)
<b>HVF 136181</b>	M18 x 1.5	13	24	150



### Dimensions

Reference	A mm	B mm
<b>HVF 136181</b>	52	32