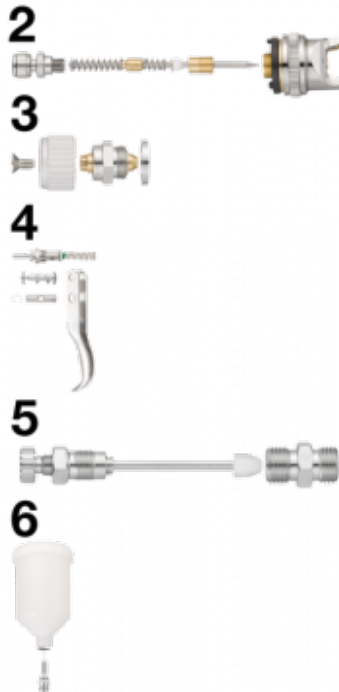


G04HVW water-based paint spray gun parts



Description

(2) Set for complete nozzle
 Ø 1.0 mm with complete
 paint flow rate adjustment
 screw

BSPP male thread

G 1/4

Construction

Body : Aluminium, Needle
 and nozzle : Stainless steel

Applications

Automotive and industrial
 sectors

Highlight

Three types of adjustment
 (width of stream, paint flow
 rate and air flow rate)

Description

Reference

Description

CAR G04HVWK1	(2) Set for complete nozzle Ø 1.0 mm with complete paint flow rate adjustment screw
CAR G04HLVWK3	(3) Set for jet form control
CAR G04HLVWK4	(4) Set for complet valve with trigger
CAR G04HLVWK5	(5) Set for complet air adjustwith nipple for air
CAR G04HLVWK2	(6) Complet cup Set

