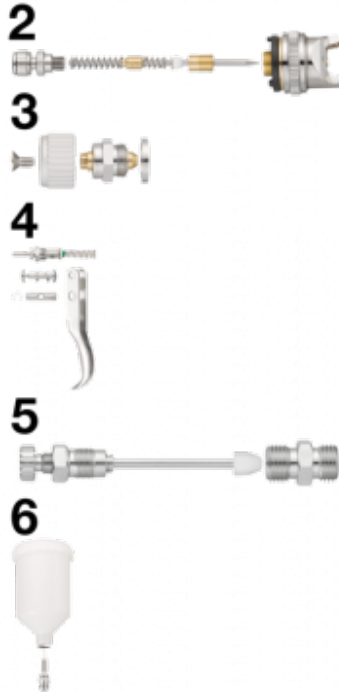


## G04LVW water-based paint spray gun parts



### Description

(2) Set for complete nozzle  
 Ø 1.0 mm with complete  
 paint flow rate adjustment  
 screw

### BSPP male thread

G 1/4

### Construction

Body : Aluminium, Needle  
 and nozzle : Stainless steel

### Applications

Automotive and industrial  
 sectors

### Highlight

Three types of adjustment  
 (width of stream, paint flow  
 rate and air flow rate)

## Description

Reference

Description

<b>CAR G04LVWK1</b>	(2) Set for complete nozzle Ø 1.0 mm with complete paint flow rate adjustment screw
---------------------	---

