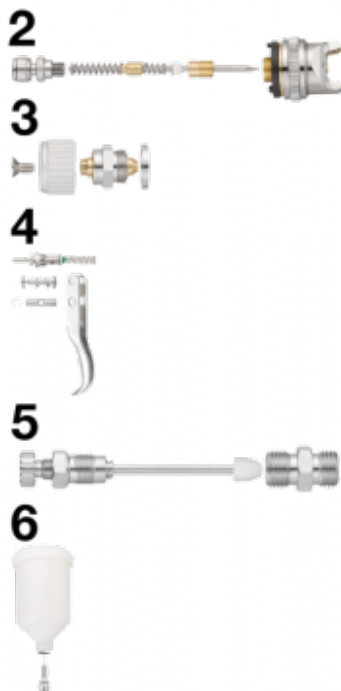


## G05HVW water-based paint spray gun parts



### Description

(2) Set for complete nozzle  
1.0 mm with complete paint  
flow rate ajustement screw

### BSPP male thread

G 1/4

### Construction

Body : Aluminium, Needle  
and nozzle : Stainless steel

### Applications

Automotive and industrial  
sectors

### Highlight

Three types of adjustment  
(width of stream, paint flow  
rate and air flow rate)

## Description

Reference

**CAR G05HVWK1**

Description

(2) Set for complete nozzle 1.0 mm with complete paint flow  
rate ajustement screw

Reference	Description
<b>CAR G05HVWK3</b>	(3) Set for jet form control
<b>CAR G05HVWK4</b>	(4) Set for complet valve with trigger
<b>CAR G05HVWK5</b>	(5) Set for complet air adjustwith nipple for air
<b>CAR G05HVWK2</b>	(6) Set for complet cup

