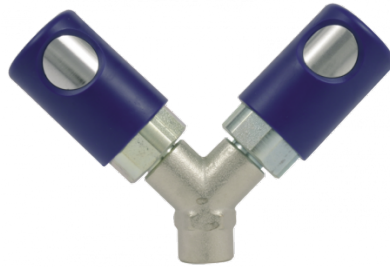


## Parallel female thread twin coupler



### BSPF female thread

G 1/4

### Technology

Push button

### Operating pressure

0 to 12 bar

### Flow rate at 6 bar

800 l/min ( $\Delta P = 0,6$  bar)

### Temperature

-15°C to +70°C

### Construction

Composite body

### Highlight

Non scratch

## Description

Reference

BSPF female thread

**IRC 068101**

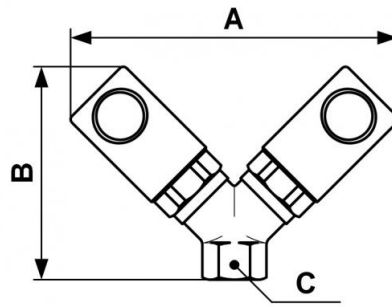
G 1/4

**IRC 068102**

G 3/8

**IRC 068103**

G 1/2



### Dimensions

Reference	A mm	B mm	C mm
<b>IRC 068101</b>	116	77	23
<b>IRC 068102</b>	120	82	23
<b>IRC 068103</b>	128	93	23