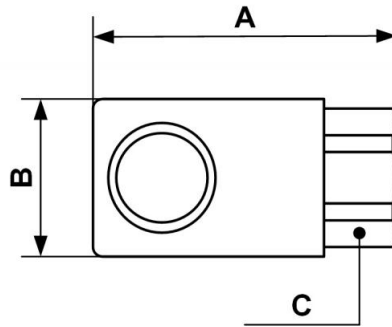


## Parallel female thread coupler



|  |   |   |   |
|--|---|---|---|
| <p><b><u>Female thread</u></b><br/>G 1/4</p> | <p><b><u>Technology</u></b><br/>Push button</p>     | <p><b><u>Operating pressure</u></b><br/>0 to 12 bar</p> | <p><b><u>Flow rate at 6 bar</u></b><br/>750 l/min (<math>\Delta P = 0,6</math> bar)</p> |
| <p><b><u>ID Passage</u></b><br/>6 mm</p>     | <p><b><u>Temperature</u></b><br/>-15°C to +70°C</p> | <p><b><u>Construction</u></b><br/>Treated steel</p>     | <p><b><u>Highlight</u></b><br/>Anti-static</p>  |

| Description |               |
|-------------|---------------|
| Reference   | Female thread |
| IRM 061101  | G 1/4         |
| IRM 061102  | G 3/8         |
| IRM 061103  | G 1/2         |
| IRM 061314  | M14 x 1.25    |



| Dimensions |      |      |      |
|------------|------|------|------|
| Reference  | A mm | B mm | C mm |
| IRM 061101 | 52.5 | 26   | 23   |
| IRM 061102 | 60.5 | 26   | 23   |
| IRM 061103 | 83.5 | 26   | 25   |
| IRM 061314 | 54.5 | 26   | 23   |