

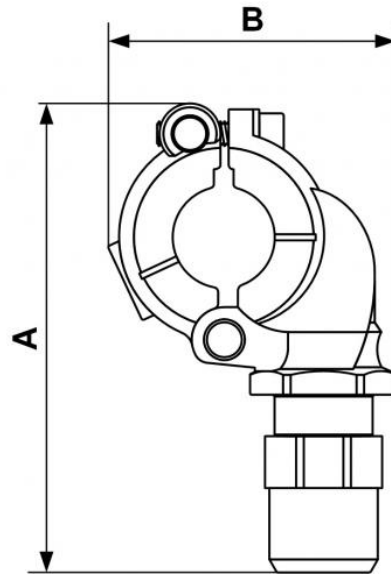
PVR BTP - Tapping flange for tube



Main network pipe OD (mm) 25	Downpipe OD (mm) 20	Max operating pressure 13 bar at 23°C 7 bar at 50°C	Vacuum capability -0.98 bar (vacuum 98%)
Temperature -20°C to +50°C	Construction Pipe and fittings: PVC	Meets standards PED REACH	

Description		
Reference	Main network pipe OD (mm)	Downpipe OD (mm)
PVR BTP2520	25	20
PVR BTP3220	32	20
PVR BTP4020	40	20
PVR BTP4025	40	25
PVR BTP5020	50	20

Reference	Main network pipe OD (mm)	Downpipe OD (mm)
PVR BTP5025	50	25
PVR BTP6320	63	20
PVR BTP6325	63	25
PVR BTP6332	63	32



Dimensions

Reference	A mm	B mm
PVR BTP2520	110	70
PVR BTP3220	110	70
PVR BTP4020	121	83
PVR BTP4025	121	87
PVR BTP5020	150	105
PVR BTP5025	150	105
PVR BTP6320	150	111
PVR BTP6325	150	111
PVR BTP6332	150	111