

Tapered male / Parallel female elbow - A10



BSPT male thread

R 1/8

BSPP female thread

G 1/8

Operating pressure

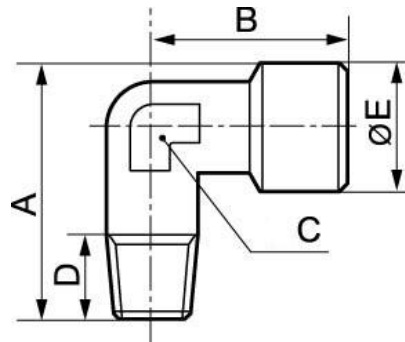
0 to 15 bar

Construction

Brass and nickel-plated
brass

Description

Reference	BSPT male thread	BSPP female thread
A10 1818	R 1/8	G 1/8
A10 1414	R 1/4	G 1/4
A10 3838	R 3/8	G 3/8
A10 1212	R 1/2	G 1/2
A10 3434	R 3/4	G 3/4
A10 0101	R 1	G 1



Dimensions

Reference	A mm	B mm	C mm	D mm	E mm
A10 1818	24.5	20.5	10	8	13.5
A10 1414	32	26	13	12	17
A10 3838	36.5	30	15	12	20.5
A10 1212	44	36	20	16	25.5
A10 3434	49	36.5	25	16	32
A10 0101	58.5	45	30	16	39