

Parallel female tee piece - A11



BSPP female thread

G 1/8

Operating pressure

0 to 15 bar

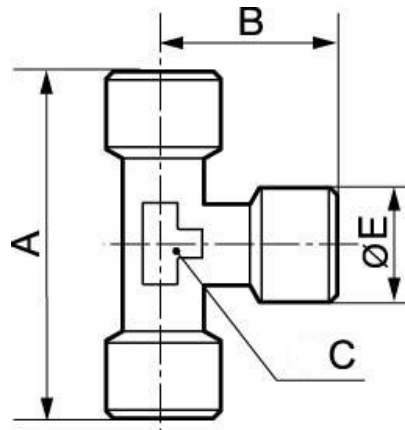
Construction

Brass and nickel-plated
brass

Description

| Reference | BSPP female thread |
|---------------|--------------------|
| A11 18 | G 1/8 |
| A11 14 | G 1/4 |
| A11 38 | G 3/8 |
| A11 12 | G 1/2 |
| A11 34 | G 3/4 |
| A11 01 | G 1 |
| A11 42 | G 1 1/4 |
| A11 49 | G 1 1/2 |

| Reference | BSPP female thread |
|-----------|--------------------|
| A11 60 | G 2 |



Dimensions

| Reference | A mm | B mm | C mm | E mm |
|---------------|------|------|------|------|
| A11 18 | 42 | 21 | 10 | 13.5 |
| A11 14 | 51 | 26 | 13 | 17 |
| A11 38 | 56 | 28.5 | 15 | 20.5 |
| A11 12 | 67 | 34.5 | 20 | 25.5 |
| A11 34 | 73 | 37 | 25 | 32 |
| A11 01 | 90 | 45 | 30 | 39 |
| A11 42 | 90 | 45 | 44.5 | 51.5 |
| A11 49 | 93 | 54 | 50 | 57.7 |
| A11 60 | 103 | 55 | 62.5 | 70 |