

Parallel female tee piece with tapered male centre - A12



BSP female thread

G 1/8

BSPT male thread

R 1/8

Operating pressure

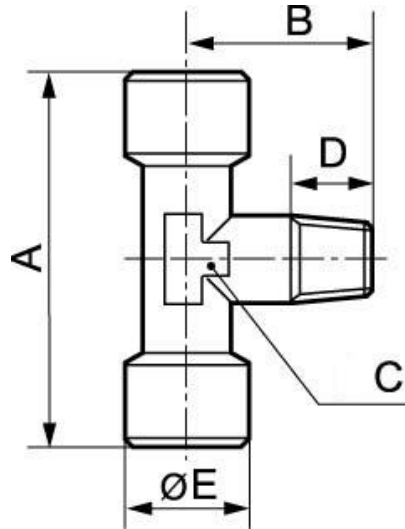
0 to 15 bar

Construction

Brass and nickel-plated
brass

Description

| Reference | BSP female thread | BSPT male thread |
|-----------------|-------------------|------------------|
| A12 1818 | G 1/8 | R 1/8 |
| A12 1414 | G 1/4 | R 1/4 |
| A12 3838 | G 3/8 | R 3/8 |
| A12 1212 | G 1/2 | R 1/2 |
| A12 3434 | G 3/4 | R 3/4 |
| A12 0101 | G 1 | R 1 |



Dimensions

| Reference | A mm | B mm | C mm | D mm | E mm |
|-----------------|------|------|------|------|------|
| A12 1818 | 39 | 16.5 | 10 | 10 | 13.5 |
| A12 1414 | 51 | 24.5 | 13 | 10 | 17 |
| A12 3838 | 56 | 26 | 15 | 12 | 20.5 |
| A12 1212 | 67 | 30 | 20 | 13 | 25.5 |
| A12 3434 | 73 | 33 | 25 | 15 | 32 |
| A12 0101 | 90 | 39 | 30 | 15 | 39 |