

Female equal cross - A14



BSPP female thread

G 1/8

Operating pressure

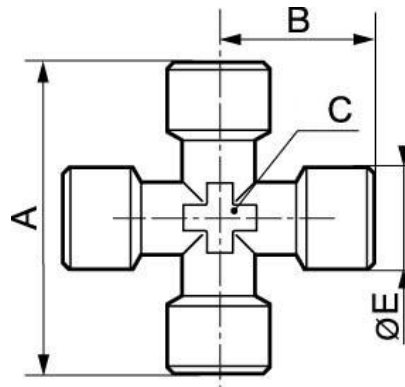
0 to 15 bar

Construction

Brass and nickel-plated
brass

Description

| Reference | BSPP female thread |
|---------------|--------------------|
| A14 18 | G 1/8 |
| A14 14 | G 1/4 |
| A14 38 | G 3/8 |
| A14 12 | G 1/2 |



Dimensions

| Reference | A mm | B mm | C mm | E mm |
|---------------|------|------|------|------|
| A14 18 | 42 | 21 | 10 | 13 |
| A14 14 | 51 | 25.5 | 13 | 17 |
| A14 38 | 56 | 28 | 17 | 21 |
| A14 12 | 67 | 33.5 | 21 | 26.5 |