

Parallel female thread - Hose tail - JFTF



BSPF female thread

G 1/8

For hose ID (mm)

6

Construction

Nickel-plated brass

Technology

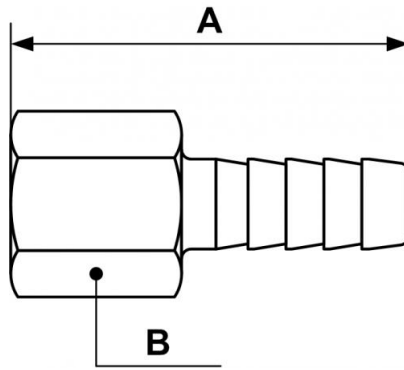
Straight through path

Operating pressure

0 to 15 bar

Description

Reference	BSPF female thread	For hose ID (mm)	Construction
JFTF 1806	G 1/8	6	Nickel-plated brass
JFTF 1406	G 1/4	6	Brass
JFTF 1407	G 1/4	7	Brass
JFTF 1408	G 1/4	8	Brass
JFTF 1409	G 1/4	9	Brass
JFTF 3810	G 3/8	10	Nickel-plated brass



Dimensions

Reference	A mm	B mm
JFTF 1806	30	14
JFTF 1406	42	17
JFTF 1407	42	17
JFTF 1408	42	17
JFTF 1409	42	17
JFTF 3810	34	20