

Hollow parallel male plug - A20



BSPB male thread

G 1/8

Tightening

5 mm Allen key

Operating pressure

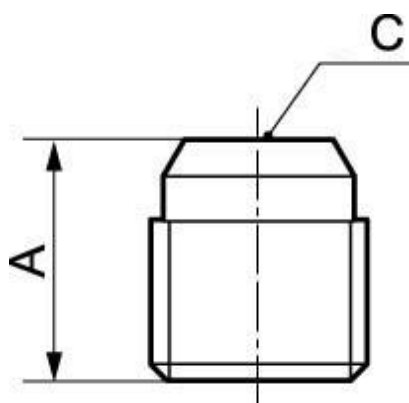
0 to 15 bar

Construction

Brass and nickel-plated
brass

Description

Reference	BSPB male thread	Tightening
A20 18	G 1/8	5 mm Allen key
A20 14	G 1/4	6 mm Allen key
A20 38	G 3/8	8 mm Allen key
A20 12	G 1/2	10 mm Allen key



Dimensions

Reference	A mm	C mm
A20 18	8	5
A20 14	10	6
A20 38	10	8
A20 12	12	10