

Parallel female thread coupler - Stainless Steel



BSPF female thread

G 1/4

Technology

Push button

Operating pressure

0 to 12 bar

Flow rate at 6 bar

800 l/min ($\Delta P = 0,6$ bar)

ID Passage

6 mm

Temperature

-15°C to +70°C

Construction

Composite body Stainless steel valve

Applications

Corrosive atmospheres

Highlight

Non scratch

Description

Reference

BSPF female thread

PROXI 061101

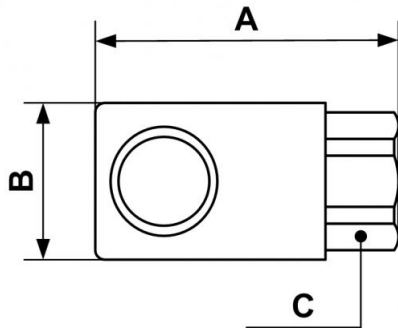
G 1/4

PROXI 061102

G 3/8

PROXI 061103

G 1/2



Dimensions

Reference	A mm	B mm	C mm
PROXI 061101	54	28	23
PROXI 061102	62	28	23
PROXI 061103	65	28	25