

Parallel male/female extender - A5 RL



BSPP male thread

G 1/8

BSPP female thread

G 1/8

Operating pressure

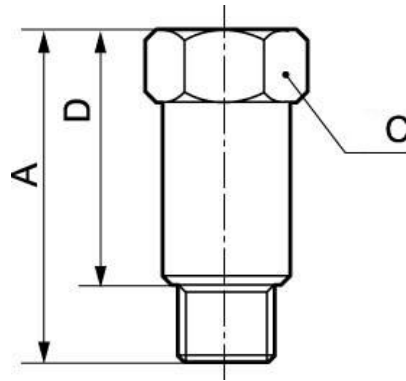
0 to 15 bar

Construction

Brass and nickel-plated
brass

Description

Reference	BSPP male thread	BSPP female thread
A5 1818RL	G 1/8	G 1/8
A5 1414RL	G 1/4	G 1/4
A5 3838RL	G 3/8	G 3/8
A5 1212RL	G 1/2	G 1/2



Dimensions

Reference	A mm	C mm	D mm
A5 1818RL	42	14	36
A5 1414RL	51	17	43
A5 3838RL	41	22	32
A5 1212RL	36	27	26