

## Olive - RO O



For tube OD (mm)

4

Max operating pressure

60 bar

Temperature

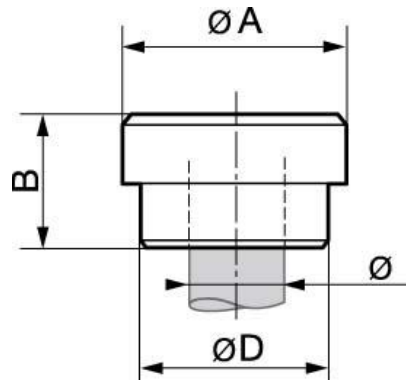
-40°C to +240°C

Construction

Nickel-plated brass

### Description

Reference	For tube OD (mm)
RO O4	4
RO O6	6
RO O8	8
RO O10	10
RO O12	12



### Dimensions

Reference	A mm	B mm	D mm
RO O4	5.5	6	5
RO O6	8	7	7.5
RO O8	10	7	9.5
RO O10	13	10	12
RO O12	15	10	14