

## Tapered thread straight male stud - RO1



### BSPT male thread

R 1/8

### For tube OD (mm)

4

### Max operating pressure

60 bar

### Temperature

-40°C to +240°C

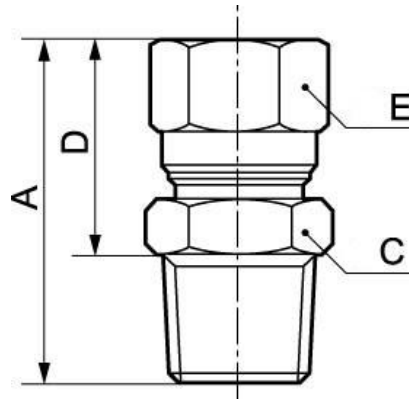
### Construction

Nickel-plated brass

## Description

Reference	BSPT male thread	For tube OD (mm)
<b>RO1 418</b>	R 1/8	4
<b>RO1 618</b>	R 1/8	6
<b>RO1 614</b>	R 1/4	6
<b>RO1 818</b>	R 1/8	8
<b>RO1 814</b>	R 1/4	8

Reference	BSPT male thread	For tube OD (mm)
<b>RO1 838</b>	R 3/8	8
<b>RO1 1014</b>	R 1/4	10
<b>RO1 1038</b>	R 3/8	10
<b>RO1 1238</b>	R 3/8	12
<b>RO1 1212</b>	R 1/2	12



### Dimensions

Reference	A mm	C mm	D mm	E mm
<b>RO1 418</b>	27.5	10	19.5	10
<b>RO1 618</b>	28	12	20	12
<b>RO1 614</b>	31	14	20	12
<b>RO1 818</b>	30	12	22	14
<b>RO1 814</b>	33	14	22	14
<b>RO1 838</b>	33.5	17	22	14
<b>RO1 1014</b>	38.5	17	27.5	19
<b>RO1 1038</b>	39	17	27.5	19
<b>RO1 1238</b>	38.5	19	27	22
<b>RO1 1212</b>	42	22	28	22