

## Parallel hexagonal male plug - A7



### Male thread

M5

### Operating pressure

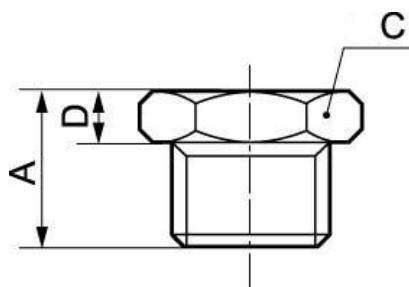
0 to 15 bar

### Construction

Brass and nickel-plated  
brass

## Description

Reference	Male thread
<b>A7 M5</b>	M5
<b>A7 18</b>	G 1/8
<b>A7 14</b>	G 1/4
<b>A7 38</b>	G 3/8
<b>A7 12</b>	G 1/2
<b>A7 34</b>	G 3/4



### Dimensions

Reference	A mm	C mm	D mm
<b>A7 M5</b>	7	14	3
<b>A7 18</b>	10	17	4
<b>A7 14</b>	12.5	19	4.5
<b>A7 38</b>	13.5	24	4.5
<b>A7 12</b>	15.5	30	5.5
<b>A7 34</b>	16.5	38	5.5