

## Parallel male/female reducer - A4Z



### BSPM male thread

G 1/8

### Female thread

M5

### Operating pressure

0 to 15 bar

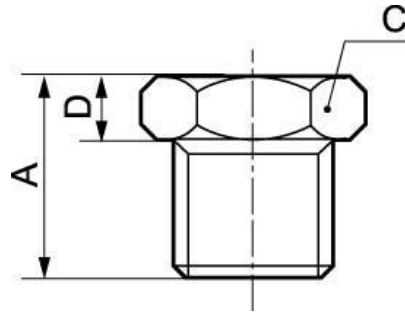
### Construction

Brass and nickel-plated  
brass

## Description

| Reference       | BSPM male thread | Female thread |
|-----------------|------------------|---------------|
| <b>A4 18M5</b>  | G 1/8            | M5            |
| <b>A4Z 1418</b> | G 1/4            | G 1/8         |
| <b>A4Z 3818</b> | G 3/8            | G 1/8         |
| <b>A4Z 3814</b> | G 3/8            | G 1/4         |
| <b>A4Z 1218</b> | G 1/2            | G 1/8         |
| <b>A4Z 1214</b> | G 1/2            | G 1/4         |
| <b>A4Z 1238</b> | G 1/2            | G 3/8         |
| <b>A4Z 3414</b> | G 3/4            | G 1/4         |

| Reference       | BSPB male thread | Female thread |
|-----------------|------------------|---------------|
| <b>A4Z 3438</b> | G 3/4            | G 3/8         |
| <b>A4Z 3412</b> | G 3/4            | G 1/2         |
| <b>A4Z 6042</b> | G 2              | G 1 1/4       |
| <b>A4Z 6049</b> | G 2              | G 1 1/2       |
| <b>A4Z 7660</b> | G 2 1/2          | G 2           |



### Dimensions

| Reference       | A mm | C mm | D mm |
|-----------------|------|------|------|
| <b>A4 18M5</b>  | 10.5 | 14   | 4.5  |
| <b>A4Z 1418</b> | 13   | 17   | 5    |
| <b>A4Z 3818</b> | 14   | 20   | 5    |
| <b>A4Z 3814</b> | 14   | 20   | 5    |
| <b>A4Z 1218</b> | 15.5 | 24   | 5.5  |
| <b>A4Z 1214</b> | 15.5 | 25   | 5.5  |
| <b>A4Z 1238</b> | 15.5 | 25   | 5.5  |
| <b>A4Z 3414</b> | 17   | 30   | 6    |
| <b>A4Z 3438</b> | 17.5 | 30   | 6.5  |
| <b>A4Z 3412</b> | 17.5 | 30   | 6.5  |
| <b>A4Z 6042</b> | 36   | 60   | 18.5 |
| <b>A4Z 6049</b> | 36   | 60   | 18.5 |
| <b>A4Z 7660</b> | 46   | 67   | 25   |