

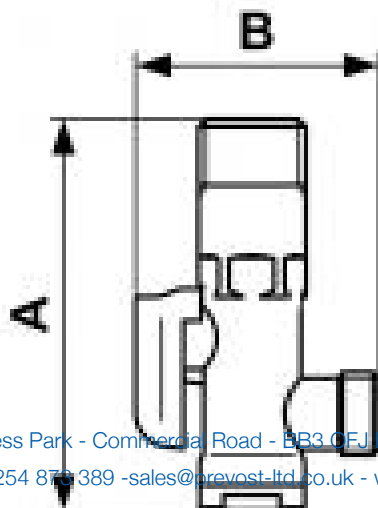
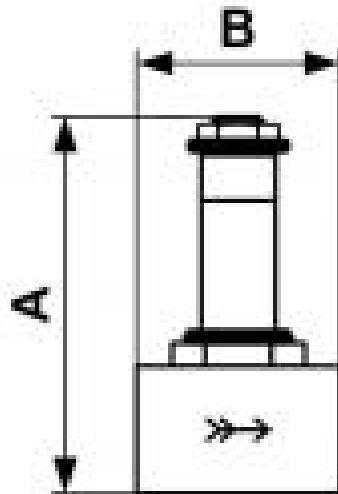
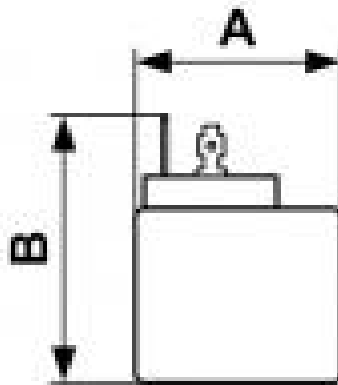
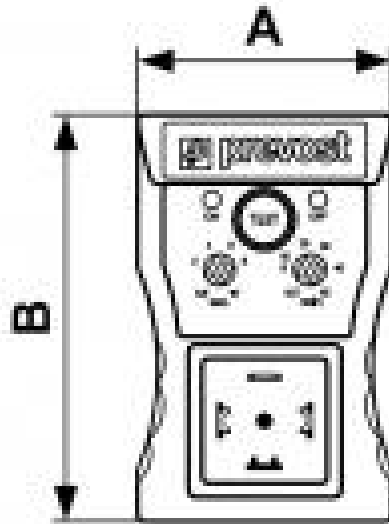
Parts



Description (1) Timer	Operating pressure 0 to 16 bar	ID Passage 4,5 mm	Temperature +2°C to +55°C
Drain cycle 0,5 - 45 min	Drain opening 0,5 - 10 sec	Supply voltage 24 - 220 V 50/60 HZ	

Description		
Reference	Description	Supply voltage
TEMP SE	(1) Timer	24V-50/60 Hz
BOB 24VA	(2) Coil	48V-50/60 Hz
BOB 48VA	(2) Coil	110V-50/60 Hz
BOB 110VA	(2) Coil	220V-50/60 Hz

Reference	Description	Supply voltage
BOB 220VA	(2) Coil 50-60 Hz alternative Standard voltage 220 V	
ELV 14HP	(3) High pressure solenoid 0 to 40 bar	
ELV 14INOX	(3) 304 stainless steel solenoid	
COL 1238	(4) Drain trap with shut-off valve	
TEMP CONNECT	(5) Power connector	



Dimensions

Reference	A mm	B mm
TEMP SE	43	74
BOB 24VA	41	53
BOB 48VA	41	53
BOB 110VA	41	53
BOB 220VA	41	53
ELV 14HP	74	40
ELV 14INOX	74	40
COL 1238	77	48
TEMP CONNECT	1.772	0.984