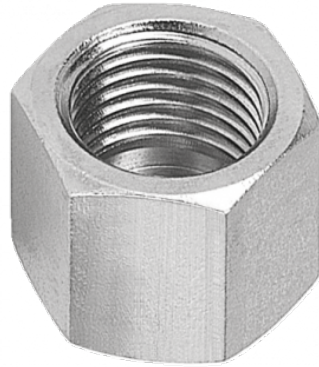


## Female cap - A8



### BSPP female thread

G 1/8

### Operating pressure

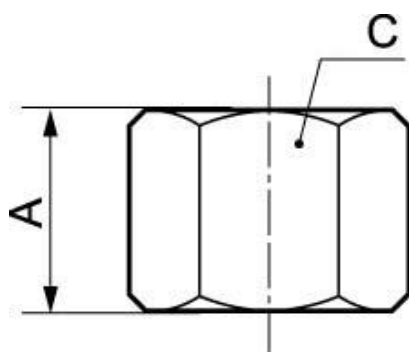
0 to 15 bar

### Construction

Brass and nickel-plated  
brass

## Description

Reference	BSPP female thread
<b>A8 18</b>	G 1/8
<b>A8 14</b>	G 1/4
<b>A8 38</b>	G 3/8
<b>A8 12</b>	G 1/2



### Dimensions

Reference	A mm	C mm
<b>A8 18</b>	13	14
<b>A8 14</b>	15	17
<b>A8 38</b>	17.5	20
<b>A8 12</b>	20	24