

Parallel female/female elbow - A9



BSPP female thread

G 1/8

Operating pressure

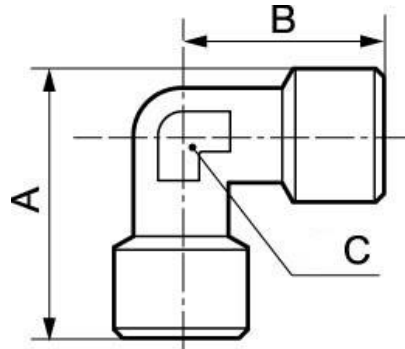
0 to 15 bar

Construction

Brass and nickel-plated
brass

Description

Reference	BSPP female thread
A9 1818	G 1/8
A9 1414	G 1/4
A9 3838	G 3/8
A9 1212	G 1/2
A9 3434	G 3/4
A9 0101	G 1



Dimensions

Reference	A mm	B mm	C mm
A9 1818	27.5	20.5	10
A9 1414	34.5	26	13
A9 3838	38.5	30	15
A9 1212	47	36	20
A9 3434	53	36.5	25
A9 0101	64.5	45	30