

Y piece with male tapered centre leg / parallel female x2- YM



**Inlet BSPT male
thread**

R 1/8

**Outlet BSPP female
thread (x2)**

G 1/8

Operating pressure

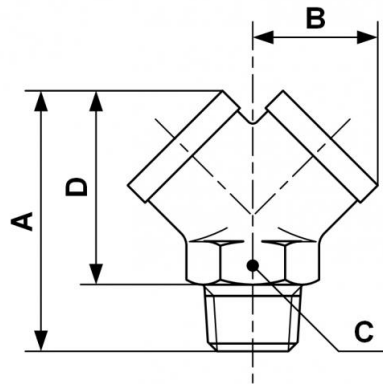
0 to 15 bar

Construction

Brass and nickel-plated
brass

Description

Reference	Inlet BSPT male thread	Outlet BSPP female thread (x2)
Y18M	R 1/8	G 1/8
Y14M	R 1/4	G 1/4
Y38M	R 3/8	G 3/8
Y12M	R 1/2	G 1/2



Dimensions

Reference	A mm	B mm	C mm	D mm
Y18M	32	14.5	13	24
Y14M	38	18	17	27
Y38M	42.5	20.5	20	31
Y12M	53	26.5	25	39