

Swivel fitting



BSP male thread

G 1/2

BSP female thread

G 1/2

Operating pressure

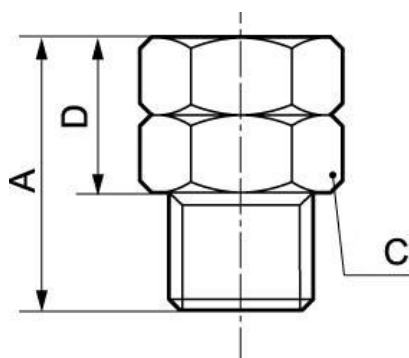
0 to 25 bar

Construction

Stainless steel 316

Description

Reference	BSP male thread	BSP female thread
A35 1212I	G 1/2	G 1/2
A35 1234I	G 1/2	G 3/4



Dimensions			
Reference	A mm	C mm	D mm
A35 1212I	40	22	28
A35 1234I	40	30	28