

## Female thread valved coupler



**BSPF female thread**

G 1/2

**Operating pressure**

0 to 10 bar

**Flow rate**

24 l/min ( $\Delta P = 0,3$  bar with shutter), 33,5 l/min ( $\Delta P = 0,3$  bar without shutter)

**ID Passage**

9 mm

**Temperature**

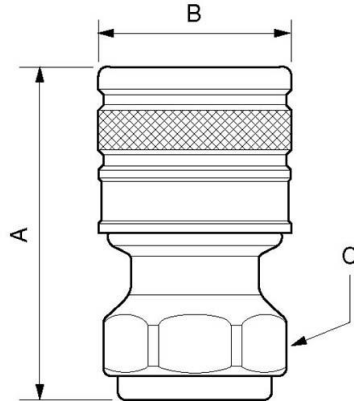
-15°C to +60°C

**Construction**

Brass body

### Description

Reference	BSPF female thread
<b>ELS 091103</b>	G 1/2
<b>ELS 091104</b>	G 3/4
<b>ELS 091105</b>	G 1



### Dimensions

Reference	A mm	B mm	C mm
<b>ELS 091103</b>	61	35	30
<b>ELS 091104</b>	61	35	30
<b>ELS 091105</b>	62.5	35	38