

## Parts

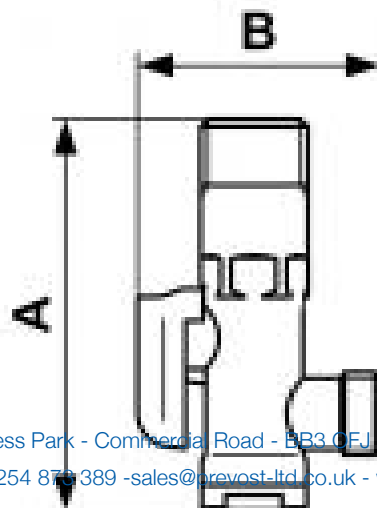
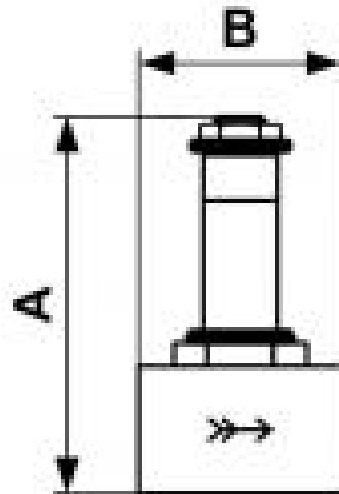
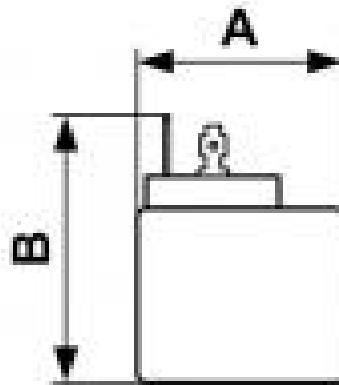
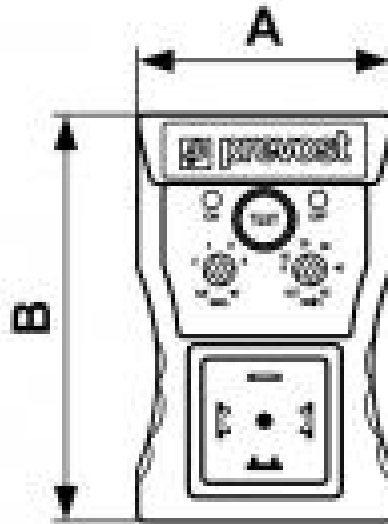


<b>Description</b> (2) Coil	<b>Supply voltage</b> 110V-50/60 Hz	<b>Operating pressure</b> 0 to 16 bar	<b>ID Passage</b> 4,5 mm
<b>Temperature</b> +2°C to +55°C	<b>Drain cycle</b> 0,5 - 45 min	<b>Drain opening</b> 0,5 - 10 sec	<b>Supply voltage</b> 24 - 220 V 50/60 HZ

Description		
Reference	Description	Supply voltage
<b>TEMP SE</b>	(1) Timer	24V-50/60 Hz
<b>BOB 24VA</b>	(2) Coil	48V-50/60 Hz
<b>BOB 48VA</b>	(2) Coil	110V-50/60 Hz
<b>BOB 110VA</b>	(2) Coil	220V-50/60 Hz

Reference	Description	Supply voltage
<b>BOB 220VA</b>	(2) Coil 50-60 Hz alternative Standard voltage 220 V	
<b>ELV 14HP</b>	(3) High pressure solenoid 0 to 40 bar	
<b>ELV 14INOX</b>	(3) 304 stainless steel solenoid	
<b>COL 1238</b>	(4) Drain trap with shut-off valve	
<b>TEMP CONNECT</b>	(5) Power connector	





**Dimensions**

Reference	A mm	B mm
<b>TEMP SE</b>	43	74
<b>BOB 24VA</b>	41	53
<b>BOB 48VA</b>	41	53
<b>BOB 110VA</b>	41	53
<b>BOB 220VA</b>	41	53
<b>ELV 14HP</b>	74	40
<b>ELV 14INOX</b>	74	40
<b>COL 1238</b>	77	48
<b>TEMP CONNECT</b>	1.772	0.984