

Hose cap - CO



For hose ID/OD

6 x 12

BSPP male thread

G 1/4

Operating pressure

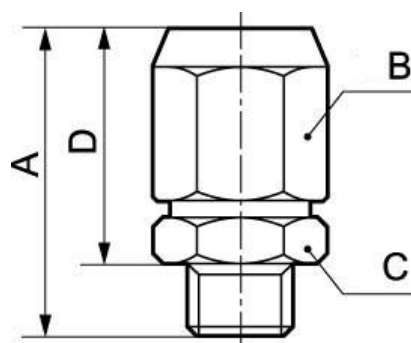
0 to 15 bar

Construction

Brass and nickel-plated
brass

Description

Reference	For hose ID/OD	BSPP male thread
CO 0612	6 x 12	G 1/4
CO 0814	8 x 14	G 1/4
CO 0915	9 x 15	G 1/4
CO 1016	10 x 16	G 1/4



Dimensions

Reference	A mm	B mm	C mm	D mm
CO 0612	35	19	17	26
CO 0814	38	22	22	28
CO 0915	38	24	22	30
CO 1016	38	24	22	30