

Socket extender parallel male thread G 1/4



Max length (mm)

50

Max operating pressure

10 bar

Flow rate

30 l/min ($\Delta P = 0,5\text{bar}$)

ID Passage

8 mm

Temperature

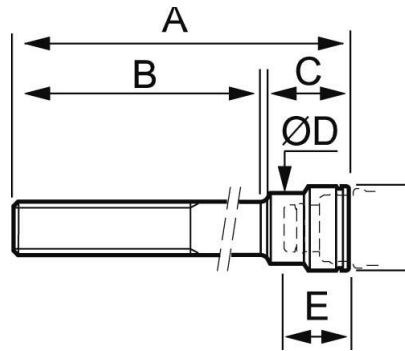
-15°C to +90°C

Construction

Body: nickel-plated brass

Description

Reference	Max length (mm)
CPI 081050F14	50
CPI 081100F14	100
CPI 081150F14	150
CPI 081200F14	200



Dimensions

Reference	A mm	B mm	C mm	D mm	E mm
CPI 081050F14	50	26.5	21	17.5	16.4
CPI 081100F14	100	60	21	17.5	16.4
CPI 081150F14	150	60	21	17.5	16.4
CPI 081200F14	200	60	21	17.5	16.4