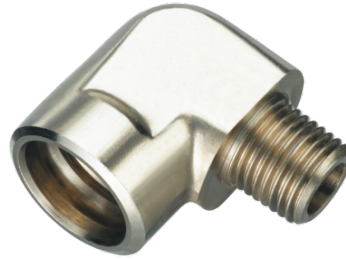


Socket 90° tapered male thread



BSPT male thread

R 1/8

Max operating pressure

10 bar

Flow rate

30 l/min ($\Delta P = 0,5\text{bar}$)

ID Passage

8 mm

Temperature

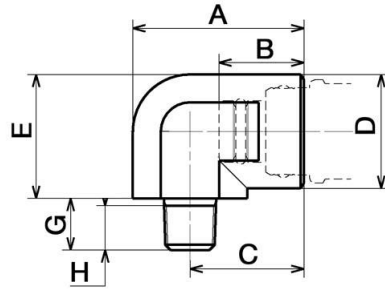
-15°C to +90°C

Construction

Body: nickel-plated brass

Description

Reference	BSPT male thread
CPI 081160RE	R 1/8
CPI 081161RE	R 1/4
CPI 081162RE	R 3/8



Dimensions

Reference	A mm	B mm	C mm	D mm	E mm
CPI 081160RE	33	16.4	22	22	24
CPI 081161RE	33	16.4	22	22	24
CPI 081162RE	33	16.4	22	22	24