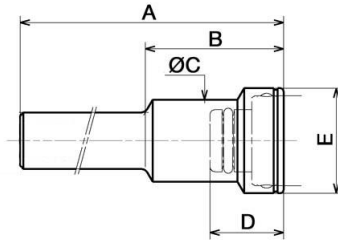


Socket extender - Smooth version - Threading to be cut: R 3/8 - NPT 3/8 or R 1/2 - NPT 1/2



Thread 3/8	Length (mm) 150	Max operating pressure 10 bar	Flow rate 85 l/min ($\Delta P = 0,5\text{bar}$)
ID Passage 12 mm	Temperature -15°C to +90°C	Construction Body: nickel-plated brass	

Description		
Reference	Thread	Length (mm)
CPI 121150L38	3/8	150
CPI 121150L12	1/2	150



Dimensions

Reference	A mm	B mm	C mm	D mm	E mm
CPI 121150L38	150	42	25	22.4	32
CPI 121150L12	150	42	25	22.4	32