

Straight socket tapered male thread



BSPT male thread

R 3/8

Max operating pressure

10 bar

Flow rate

85 l/min ($\Delta P = 0,5\text{bar}$)

ID Passage

12 mm

Temperature

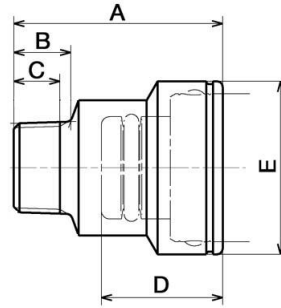
-15°C to +90°C

Construction

Body: nickel-plated brass

Description

Reference	BSPT male thread
CPI 121162	R 3/8
CPI 121163	R 1/2



Dimensions

Reference	A mm	B mm	C mm	D mm	E mm
CPI 121162	38.5	10.5	8.5	22.4	32
CPI 121163	42	14	12	22.4	32