

Socket extender parallel male thread G 1/8



Max length (mm)

50

Max operating pressure

10 bar

Flow rate

30 l/min ($\Delta P = 0,5\text{bar}$)

ID Passage

8 mm

Temperature

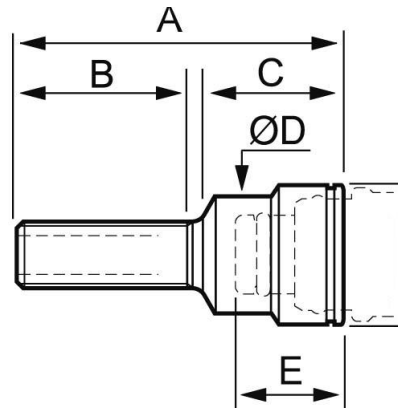
-15°C to +90°C

Construction

Body: nickel-plated brass

Description

Reference	Max length (mm)
CPI 081050F18	50
CPI 081100F18	100
CPI 081150F18	150



Dimensions

Reference	A mm	B mm	C mm	D mm	E mm
CPI 081050F18	50	16.5	21	17.5	16.4
CPI 081100F18	100	60	21	17.5	16.4
CPI 081150F18	150	60	21	17.5	16.4