

Socket 135° tapered male thread



BSPT male thread

R 1/8

Max operating pressure

10 bar

Flow rate

30 l/min ($\Delta P = 0,5\text{bar}$)

ID Passage

8 mm

Temperature

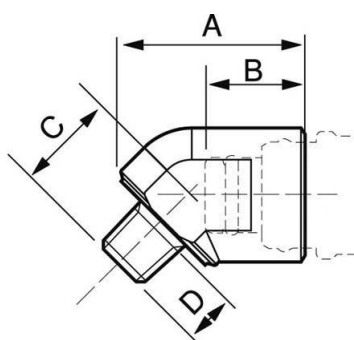
-15°C to +90°C

Construction

Body: nickel-plated brass

Description

Reference	BSPT male thread
CPI 081160RO	R 1/8
CPI 081161RO	R 1/4
CPI 081162RO	R 3/8



Dimensions

Reference	A mm	B mm	C mm	D mm
CPI 081160RO	31	18.5	16.5	10
CPI 081161RO	30	18.5	16.5	12
CPI 081162RO	31	18.5	16.5	12