

Push-on straight plug for self-locking hose



For hose ID (mm)

13

Max operating pressure

10 bar

Flow rate

85 l/min ($\Delta P = 0,5\text{bar}$)

ID Passage

12 mm

Temperature

-15°C to +90°C

Construction

Body: nickel-plated brass

Description

Reference

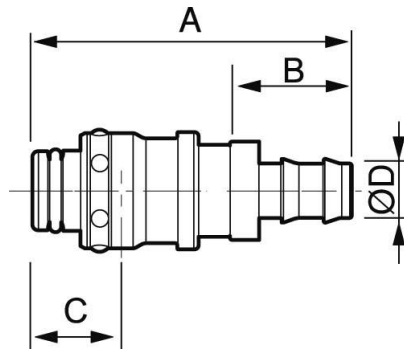
For hose ID (mm)

CPI 126813CN

13

CPI 126816CN

16



Dimensions

Reference	A mm	B mm	C mm	D mm
CPI 126813CN	76	28	22.4	13
CPI 126816CN	83.5	35.5	22.4	16