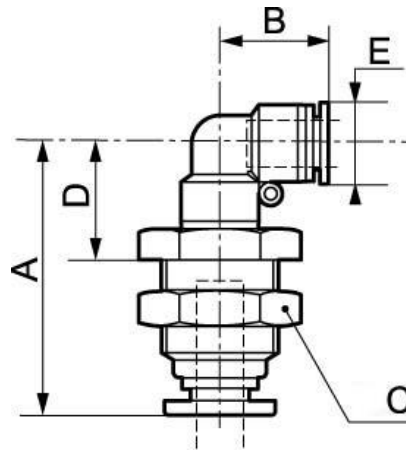


90° elbow bulkhead fitting - RPC TT



| | | | |
|--|--|-------------------------------------|---|
| <u>Panel depth (mm)</u> 10 | <u>Drill Ø (mm)</u> 13 | <u>For tube OD (mm)</u> 4 | <u>Operating pressure</u> 0 to 10 bar |
| <u>Temperature</u> 0°C to + 60°C | <u>Construction</u> Polymer and nickel-plated brass | | |

| Description | | | |
|-------------|------------------|--------------|------------------|
| Reference | Panel depth (mm) | Drill Ø (mm) | For tube OD (mm) |
| RPC TT0404 | 10 | 13 | 4 |
| RPC TT0505 | 10 | 15 | 5 |
| RPC TT0606 | 10 | 15 | 6 |
| RPC TT0808 | 10 | 17 | 8 |
| RPC TT1010 | 10 | 21 | 10 |
| RPC TT1212 | 11 | 23 | 12 |
| RPC TT1414 | 11 | 26 | 14 |
| RPC TT1616 | 11 | 26 | 16 |



Dimensions

| Reference | A mm | B mm | C mm | D mm | E mm |
|-------------------|------|------|------|------|------|
| RPC TT0404 | 37 | 17.5 | 14 | 18 | 10 |
| RPC TT0505 | 39.5 | 20.5 | 17 | 18 | 12.8 |
| RPC TT0606 | 40.5 | 20.5 | 17 | 21.5 | 12.8 |
| RPC TT0808 | 45 | 22.8 | 19 | 24 | 13.8 |
| RPC TT1010 | 48 | 26.3 | 24 | 25 | 16.8 |
| RPC TT1212 | 54 | 27.8 | 26 | 27 | 19.8 |
| RPC TT1414 | 51 | 29.8 | 26 | 28 | 22.7 |
| RPC TT1616 | 54 | 30.8 | 28 | 30 | 23.8 |