

Straight union for unequal tubes - RPU IT



For tube OD (mm)

4

Operating pressure

0 to 10 bar

Temperature

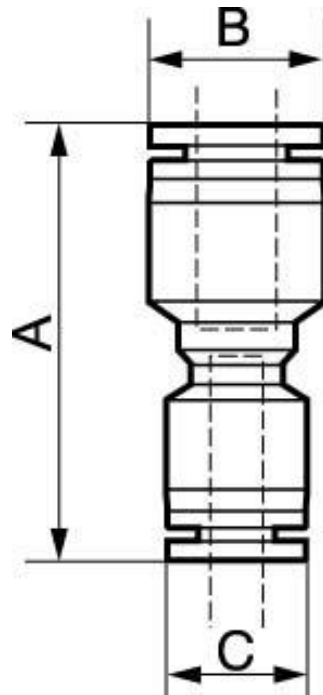
0°C to + 60°C

Construction

Polymer and nickel-plated
brass

Description

Reference	For tube OD (mm)
RPU IT0604	4
RPU IT0806	6
RPU IT1008	8
RPU IT1210	10
RPU IT1612	12



Dimensions

Reference	A mm	B mm	C mm
RPU IT0604	33.1	12.8	10
RPU IT0806	38.3	13.8	12.8
RPU IT1008	41.1	16.8	13.8
RPU IT1210	45.3	19.8	16.8
RPU IT1612	49.6	23.8	19.6