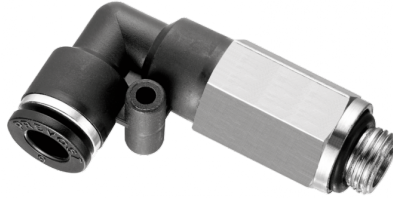


## Long parallel male 90° elbow - RPC LG



### BSP male thread

G 1/8

### For tube OD (mm)

4

### Operating pressure

0 to 10 bar

### Temperature

0°C to + 60°C

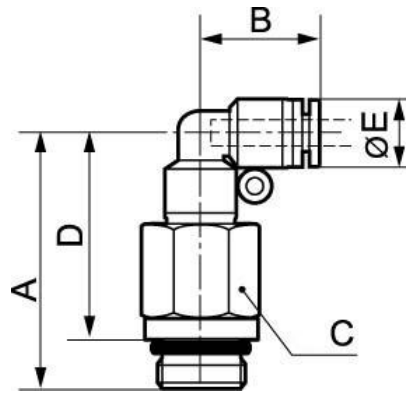
### Construction

Polymer and nickel-plated  
brass

## Description

Reference	BSP male thread	For tube OD (mm)
<b>RPC LG0400</b>	G 1/8	4
<b>RPC LG0401</b>	G 1/4	4
<b>RPC LG0500</b>	G 1/8	5
<b>RPC LG0501</b>	G 1/4	5
<b>RPC LG0502</b>	G 3/8	5
<b>RPC LG0503</b>	G 1/2	5
<b>RPC LG0600</b>	G 1/8	6
<b>RPC LG0601</b>	G 1/4	6
<b>RPC LG0602</b>	G 3/8	6

Reference	BSPB male thread	For tube OD (mm)
RPC LG0603	G 1/2	6
RPC LG0800	G 1/8	8
RPC LG0801	G 1/4	8
RPC LG0802	G 3/8	8
RPC LG0803	G 1/2	8
RPC LG1000	G 1/8	10
RPC LG1001	G 1/4	10
RPC LG1002	G 3/8	10
RPC LG1003	G 1/2	10
RPC LG1201	G 1/4	12
RPC LG1202	G 3/8	12
RPC LG1203	G 1/2	12
RPC LG1402	G 3/8	14
RPC LG1403	G 1/2	14
RPC LG1602	G 3/8	16
RPC LG1603	G 1/2	16



### Dimensions

Reference	A mm	B mm	C mm	D mm	E mm
<b>RPC LG0400</b>	34.5	17.5	14	29	10
<b>RPC LG0401</b>	35	17.5	17	29	10
<b>RPC LG0500</b>	40	20.5	14	34.5	12.8
<b>RPC LG0501</b>	42	20.5	17	36	12.8
<b>RPC LG0502</b>	43.5	20.5	21	37	12.8
<b>RPC LG0503</b>	44.5	20.5	24	36.5	12.8
<b>RPC LG0600</b>	40	20.5	14	34.5	12.8
<b>RPC LG0601</b>	42	20.5	17	36	12.8
<b>RPC LG0602</b>	43.5	20.5	21	37	12.8
<b>RPC LG0603</b>	44.5	20.5	24	36.5	12.8
<b>RPC LG0800</b>	44	22.5	14	38.5	13.8
<b>RPC LG0801</b>	44	22.5	14	38	13.8
<b>RPC LG0802</b>	45.5	22.5	17	39	13.8
<b>RPC LG0803</b>	46.5	22.5	24	38.5	13.8
<b>RPC LG1000</b>	51.7	26.3	17	46.2	16.8

Reference	A mm	B mm	C mm	D mm	E mm
<b>RPC LG1001</b>	52.2	26.3	17	46.2	16.8
<b>RPC LG1002</b>	52.2	26.3	21	45.7	16.8
<b>RPC LG1003</b>	53.2	26.3	24	45.2	16.8
<b>RPC LG1201</b>	55	27.8	19	49	19.8
<b>RPC LG1202</b>	54.5	27.8	21	48	19.8
<b>RPC LG1203</b>	56	27.8	24	48	19.8
<b>RPC LG1402</b>	57	29.8	24	50.5	22.7
<b>RPC LG1403</b>	58.5	29.8	24	50.5	22.7
<b>RPC LG1602</b>	58.5	30.8	24	52	23.8
<b>RPC LG1603</b>	60	30.8	24	52	23.8