

Parallel male 90° elbow - RPC MG



Metric male thread

M5

For tube OD (mm)

4

Operating pressure

0 to 10 bar

Temperature

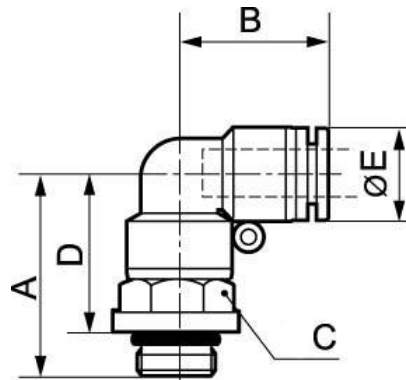
0°C to + 60°C

Construction

Polymer and nickel-plated
brass

Description

Reference	Metric male thread	For tube OD (mm)
RPC MG04M5	M5	4
RPC MG05M5	M5	5
RPC MG06M5	M5	6



Dimensions

Reference	A mm	B mm	C mm	D mm	E mm
RPC MG04M5	25	17.5	10	21	10
RPC MG05M5	27.5	20.5	12	23.5	12.8
RPC MG06M5	27.5	20.5	12	23.5	12.8