

Parallel female straight bulkhead fitting - RPD TG



BSPF female thread

G 1/8

For tube OD (mm)

4

Operating pressure

0 to 10 bar

Temperature

0°C to + 60°C

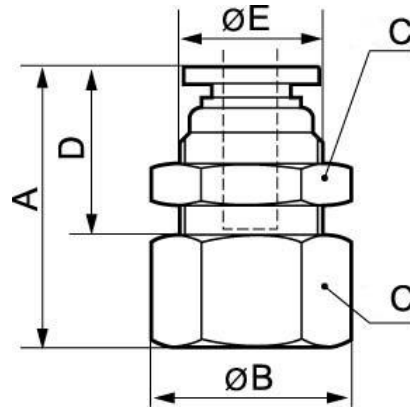
Construction

Polymer and nickel-plated
brass

Description

Reference	BSPF female thread	For tube OD (mm)
RPD TG0400	G 1/8	4
RPD TG0401	G 1/4	4
RPD TG0500	G 1/8	5
RPD TG0501	G 1/4	5
RPD TG0502	G 3/8	5

Reference	BSPF female thread	For tube OD (mm)
RPD TG0503	G 1/2	5
RPD TG0600	G 1/8	6
RPD TG0601	G 1/4	6
RPD TG0602	G 3/8	6
RPD TG0603	G 1/2	6
RPD TG0800	G 1/8	8
RPD TG0801	G 1/4	8
RPD TG0802	G 3/8	8
RPD TG0803	G 1/2	8
RPD TG1000	G 1/8	10
RPD TG1001	G 1/4	10
RPD TG1002	G 3/8	10
RPD TG1003	G 1/2	10
RPD TG1201	G 1/4	12
RPD TG1202	G 3/8	12
RPD TG1203	G 1/2	12
RPD TG1402	G 3/8	14
RPD TG1403	G 1/2	14
RPD TG1602	G 3/8	16
RPD TG1603	G 1/2	16



Dimensions

Reference	A mm	B mm	C mm	D mm	E mm
RPD TG0400	24.5	16.5	14	15.5	10
RPD TG0401	26	20	17	17	10
RPD TG0500	27	20	17	18.5	12.8
RPD TG0501	28	20	17	18.5	12.8
RPD TG0502	29.5	22	19	19.5	12.8
RPD TG0503	31	28	24	19	12.8
RPD TG0600	27	20	17	18.5	12.8
RPD TG0601	28	20	17	18.5	12.8
RPD TG0602	29.5	22	19	19.5	12.8
RPD TG0603	31	28	24	19	12.8
RPD TG0800	26.5	20	17	17.5	13.8
RPD TG0801	28	20	17	18.5	13.8
RPD TG0802	29	22	19	19	13.8
RPD TG0803	31.5	28	24	19.5	13.8
RPD TG1000	29.5	24.5	21	21	16.8

Reference	A mm	B mm	C mm	D mm	E mm
RPD TG1001	29.5	24.5	21	20	16.8
RPD TG1002	31.5	24.5	21	21.5	16.8
RPD TG1003	31.5	28	24	19.5	16.8
RPD TG1201	32	28	24	22.5	19.8
RPD TG1202	33	28	24	23	19.8
RPD TG1203	33	28	24	21	19.8
RPD TG1402	32.5	28	24	22.5	22.7
RPD TG1403	34.5	28	24	22.5	22.7
RPD TG1602	32.3	28	24	22.3	23.8
RPD TG1603	34.3	28	24	22.3	23.8