

Parallel male 135° elbow - RPQ MG



BSP male thread

G 1/8

For tube OD (mm)

4

Operating pressure

0 to 10 bar

Temperature

0°C to + 60°C

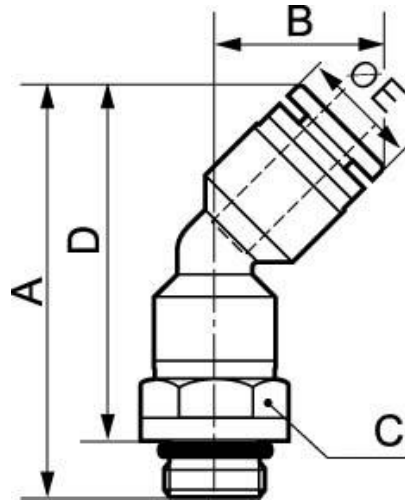
Construction

Polymer and nickel-plated
brass

Description

Reference	BSP male thread	For tube OD (mm)
RPQ MG0400	G 1/8	4
RPQ MG0401	G 1/4	4
RPQ MG0500	G 1/8	5
RPQ MG0501	G 1/4	5
RPQ MG0502	G 3/8	5
RPQ MG0503	G 1/2	5
RPQ MG0600	G 1/8	6

Reference	BSPB male thread	For tube OD (mm)
RPQ MG0601	G 1/4	6
RPQ MG0602	G 3/8	6
RPQ MG0603	G 1/2	6
RPQ MG0800	G 1/8	8
RPQ MG0801	G 1/4	8
RPQ MG0802	G 3/8	8
RPQ MG0803	G 1/2	8
RPQ MG1000	G 1/8	10
RPQ MG1001	G 1/4	10
RPQ MG1002	G 3/8	10
RPQ MG1003	G 1/2	10
RPQ MG1201	G 1/4	12
RPQ MG1202	G 3/8	12
RPQ MG1203	G 1/2	12



Dimensions

Reference	A mm	B mm	C mm	D mm	E mm
RPQ MG0400	38	14.5	12	33.5	10
RPQ MG0401	39	14.5	14	33	10
RPQ MG0500	41.5	16.5	12	35.5	12.8
RPQ MG0501	42.5	16.5	14	36.5	12.8
RPQ MG0502	44	16.5	17	37.5	12.8
RPQ MG0503	44	16.5	21	36	12.8
RPQ MG0600	42	16.5	12	35.5	12.8
RPQ MG0601	43	16.5	14	37	12.8
RPQ MG0602	44	16.5	17	37.5	12.8
RPQ MG0603	45	16.5	21	37	12.8
RPQ MG0800	46	19	14	40.5	13.8
RPQ MG0801	46	19	14	40	13.8
RPQ MG0802	47	19	17	40	13.8
RPQ MG0803	48.5	19	21	40.5	13.8

Reference	A mm	B mm	C mm	D mm	E mm
RPQ MG1000	51	22	17	45	16.8
RPQ MG1001	51	22	17	45	16.8
RPQ MG1002	51	22	17	44.5	16.8
RPQ MG1003	52	22	21	44	16.8
RPQ MG1201	55	23	19	49	19.8
RPQ MG1202	55	23	19	48.5	19.8
RPQ MG1203	56	23	21	48	19.8