

## Parallel male thread coupler 90°



### ID Passage (mm)

6

### BSPP male thread

G 1/4

### Max operating pressure

16 bar

### Temperature

+15°C to +200°C

### Construction

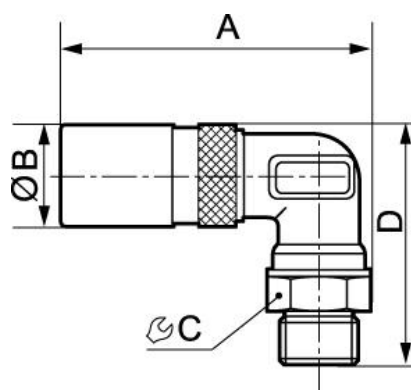
Brass body

### Applications

Cooling circuits, cleaning, rinsing, food processing industry

## Description

Reference	ID Passage (mm)	BSPP male thread
<b>PREOL 061151RE</b>	6	G 1/4
<b>PREOL 091152RE</b>	9	G 3/8
<b>PREOL 121153RE</b>	12	G 1/2



### Dimensions

Reference	A mm	B mm	C mm	D mm
<b>PREOL 061151RE</b>	57	19	17	44
<b>PREOL 091152RE</b>	64.5	25	21	52
<b>PREOL 121153RE</b>	80	31	24	61