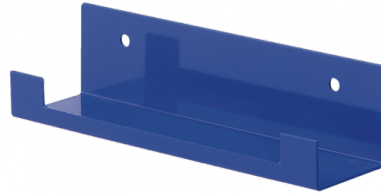


Wall bracket for gantry



Description

Wall bracket

Temperature

+5°C to +50 °C

Construction

Body : Aluminium
Polycarbonate bowl with
metallic protection

Highlight

Easy to transport

Equipped with

Coupler and adaptor

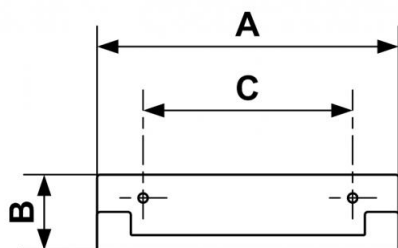
Description

Reference

PT K

Description

Wall bracket



Dimensions

Reference	A mm	B mm	C mm
PT K	10.079	2.48	7.165